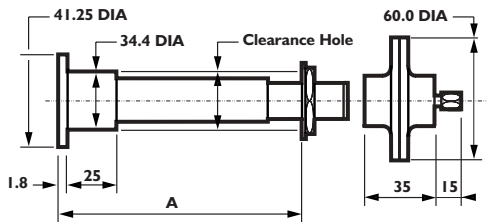
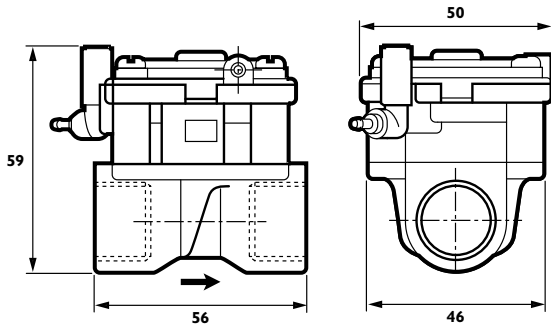
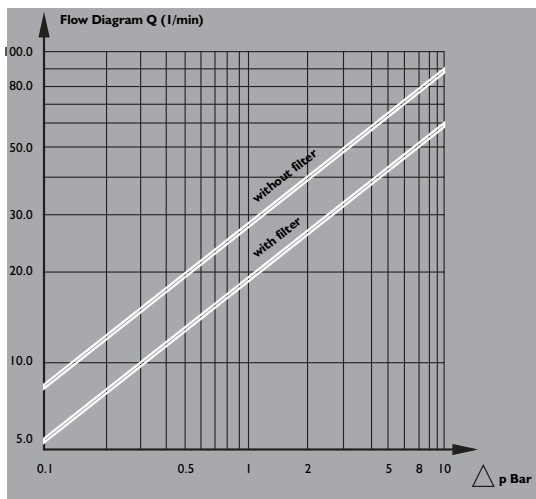


Secureflow™ anti-vandal time flow control system



Wall dimension A=40,100,150 and 200 mm
Material: Stainless Steel and DZR Brass
All dimensions shown in mm



Dimensions in mm

Data

Maximum temperature	- 70°C
Recommended pressure	- 0.3 to 3.0 Bar
Maximum pressure	- 10 Bar
Time adjustment	
5 seconds minimum	- 5 minutes maximum
Maximum air tube length	- 4 metres
Connections	- 1/2" BSP(F)

The use of isolating ball valve strainers is recommended with this valve.

Code numbers

Secureflow™ anti-vandal time flow control complete with air solenoid and diaphragm actuator.

750040 - Secureflow™ crosswall 40 for wall thickness up to 15mm.

750100 - Secureflow™ crosswall 100 for wall thickness up to 75mm.

750200 - Secureflow™ crosswall 200 for wall thickness up to 175mm.

750250 - Secureflow™ crosswall 250 for wall thickness up to 225mm.

Materials

1. Air operated valve

Body	- brass
Top bonnet	- polyphenylene sulphide
Top cover	- polyphenylene sulphide
Diaphragm	- EDPM rubber
Pilot tube	- PVC

2. Push button assembly

Body	- brass
Push button	- stainless steel
Actuator diaphragm body	- plastic
Diaphragm	- EDPM rubber

Application

The Douglas Secureflow™ anti-vandal time flow control system is used to supply timed amounts of mixed water for hand-wash applications in schools, hotels, hospitals, food factories, motorway service areas and anywhere where washing under running water is needed. The Secureflow™ button flange is designed for ligature free operation for use in prisons, secure units and hospital mental health units. It is also ideal for showers in sports halls, schools, and campsites.

Industrial applications include abattoirs, supermarket food areas, restaurants, hotel kitchens, surgeon's scrub-up areas in hospitals and general hand washing.

Secureflow™ crosswall push buttons are available for blockwalls of differing thickness between 15-225mm.

Secureflow's unique 'Dry' system, using air instead of water to activate the timed flow eliminates the problem of scale and dirt ensuring safe, reliable timing every time.