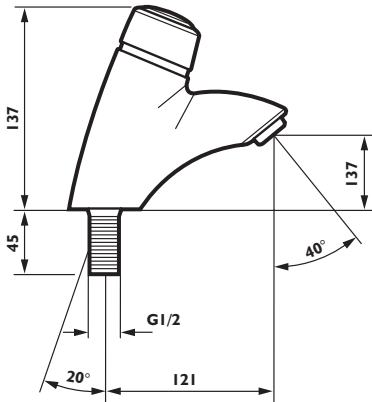
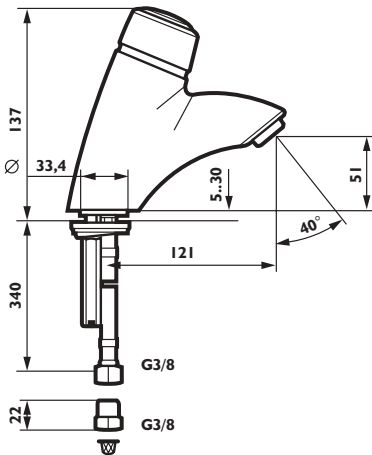


Pneumatic time flow basin tap

Pneumatic time flow basin mixer

Data

Recommended pressures	– 1.0 to 3.0 bar
Min/max pressures	– 1.0 to 10.0 bar.
Flow regulator	– 6 L/min.
Temperature range	– 5 to 65 °C.
Temperature limitation	– Adjustable.
Flow duration	– 5 to 30 sec ± 2 sec factory setting: 8 sec.

Easy single handle operation

Timing mechanism not in contact with water

Excellent timing stability

Magnetic on / off operation

Soft valve closing

Water economy – 6 L/min

Materials

Body – brass, chrome plated.

Code numbers

218200 - Pneumatic time flow basin tap.

218222 - Pneumatic time flow basin mixer.

Application

For best operation the hot and cold supply pressures should be equal.

To operate simply press the handle. The basin mixer will close automatically after the preset time (*adjustable*). The water temperature can be adjusted during operation by rotating the handle. When operated again the mixer will re-open at its previous temperature setting.

Safe water temperatures.

Basin taps and mixers should always be used in conjunction with an appropriate thermostatic mixing valve to provide a safe maximum water temperature.

How to specify

Pneumatic time flow basin tap. Code no 218200

Pneumatic time flow basin mixer. Code no 218222

Dimensions in mm