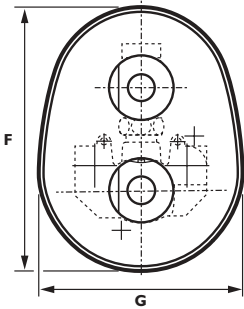
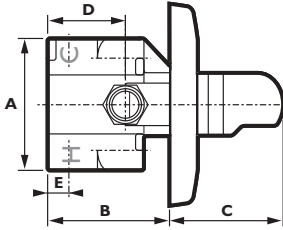
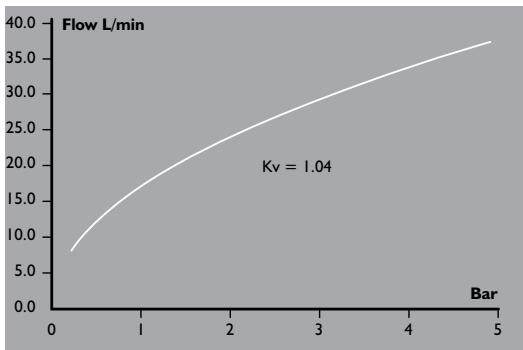


## Thermomix recessed shower control



- A.** 90mm            **E.** 15mm  
**B.** 73 - 90mm    **F.** 180mm  
**C.** 90 - 73mm    **G.** 140mm  
**D.** 50mm

## Capacity with open discharge



## Data

- Maximum temperature – 80°C
- Recommended pressure – 0.3 to 3.0 Bar
- Maximum pressure – 7 Bar
- Normal control temperature – 41°C.
- Optional higher setting – 44°C.
- Separate control knobs for flow and thermostatic temperature control.
- Connections
  - Inlet – 1/2" BSP(F) / 15mm comp
  - Outlet – 1/2" BSP(F) / 15mm comp
- NRV and Filters fitted to hot and cold inlets.
- Complies with – BS EN1111
- Temperature differential – 10°C (Cold water failsafe)
- Full spares kit available.

The use of isolating ball valve strainers is recommended with this valve.

## Materials

- Body – Brass
- Cartridge – Hostalen PPN
- Knobs – ABS chrome plate
- Coverplate – Chrome plate finish

## Code numbers

- 216450 - Thermomix shower valve recessed, chrome finish.
- 260003 - Keysafe isolating ball valve strainers 15mm.

## Application

The Thermomix dual control shower valve is an attractive robust unit, ideally suited for single point shower applications where durability and high performance is essential.

Its ideally suited for use in houses, hotels, university halls of residence and sports & leisure facilities.

## How to specify

Thermomix shower valve for recessed mounting, chrome finish. Code no. 216450

Wall Outlet for use with Thermomix shower valve, chrome. Code no. 207010

Keysafe isolating ball valve strainers 15mm. Code no. 260003